

Mount View

CHURCH STREET • MALPAS  
CHESHIRE

# CAMPION HOUSE

A superbly designed 4 bedroom detached family home



Bespoke design your own home



Orchard House Properties

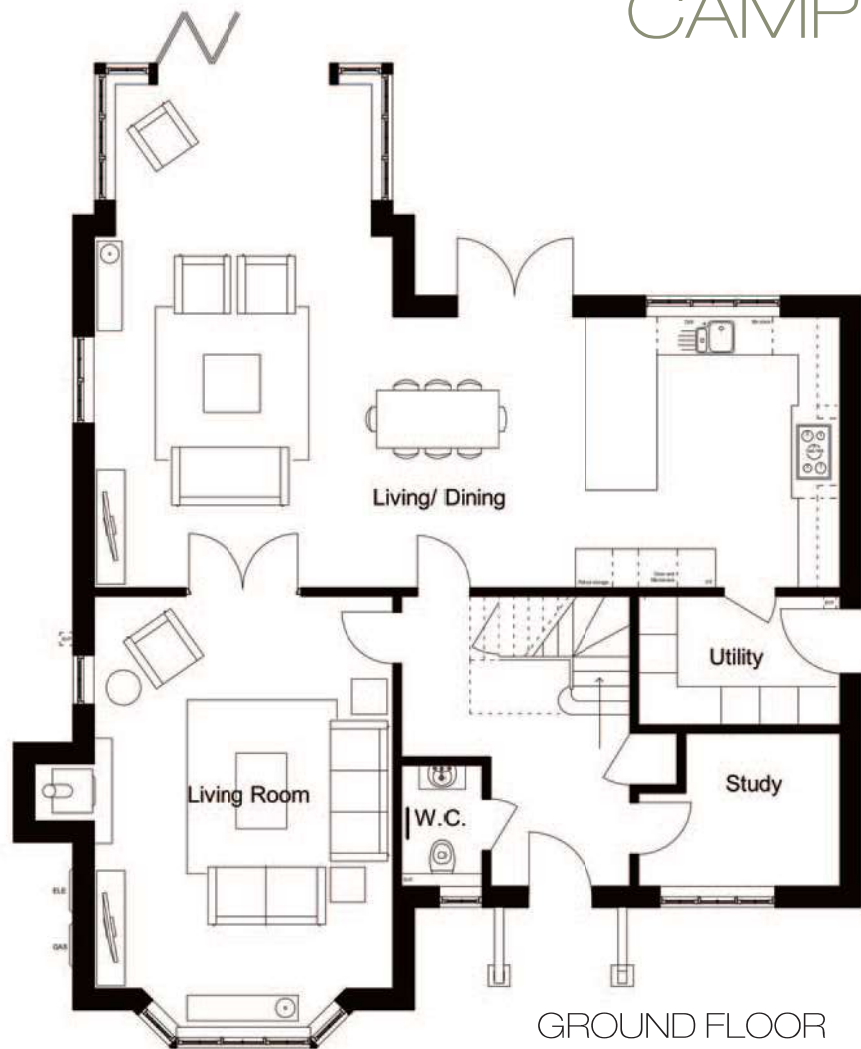
[info@ohpdl.co.uk](mailto:info@ohpdl.co.uk)

[www.orchardhouseproperties.co.uk](http://www.orchardhouseproperties.co.uk)

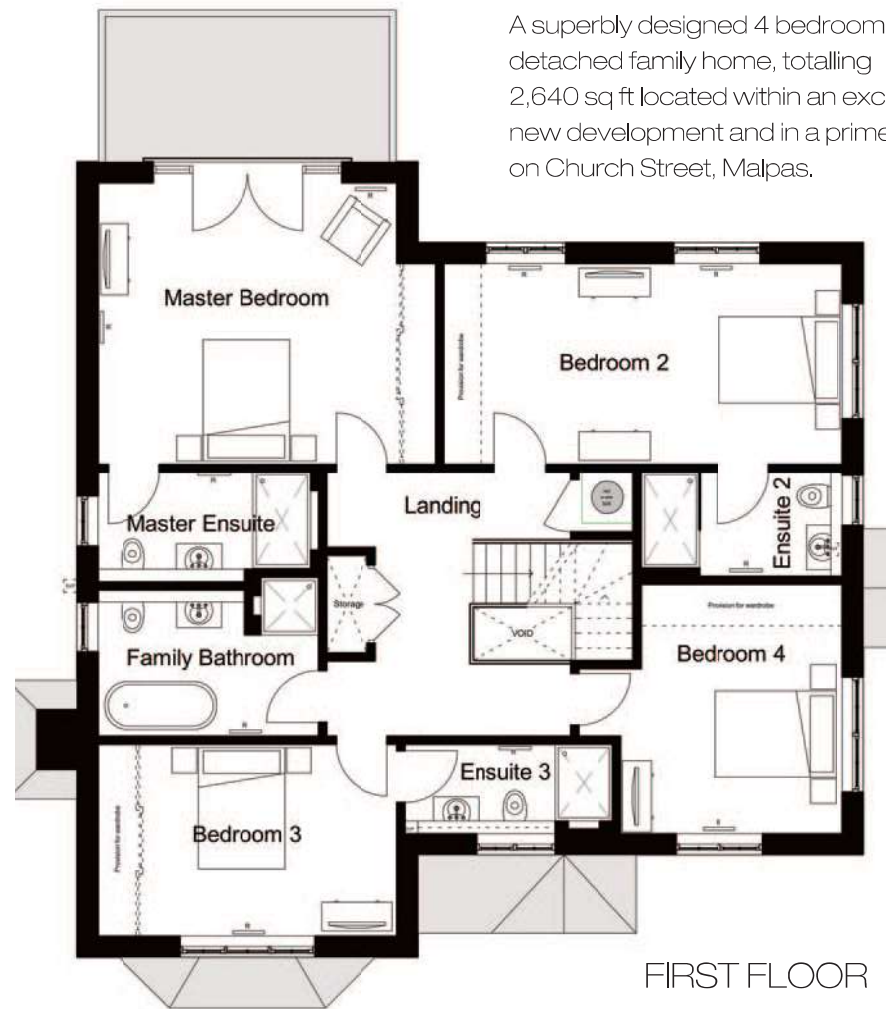
For sales enquiries call **01948 512 003**

# CAMPION HOUSE

A superbly designed 4 bedroom detached family home, totalling 2,640 sq ft located within an exclusive new development and in a prime position on Church Street, Malpas.



GROUND FLOOR



FIRST FLOOR

## GROUND FLOOR

Living Room	6.2 x 4.7 m	20' 3 x 15' 4 ft
Kitchen/Dining	11.6 x 7.9 m	38' 0 x 25' 9 ft
Study	3.1 x 2.0 m	10' 2 x 6' 6 ft
Utility	3.1 x 2.0 m	10' 2 x 6' 6 ft
Hall	4.5 x 3.7 m	14' 7 x 12' 1 ft
WC	1.7 x 1.3 m	5' 6 x 4' 2 ft

Attractive south facing garden.  
Detached double garage, driveway with ample car parking.

## FIRST FLOOR

Master Bed	5.4 x 4.4 m	17' 7 x 14' 4 ft
MB - En-suite	3.5 x 1.7 m	11' 4 x 5' 5 ft
Bed 2	6.2 x 3.1 m	20' 3 x 10' 1 ft
B2 - En-suite	3.1 x 1.6 m	10' 1 x 5' 3 ft
Bed 3	4.7 x 3.0 m	15' 4 x 9' 8 ft
B3 - En-suite	3.2 x 1.4 m	10' 5 x 4' 6 ft
Bed 4	4.1 x 3.9 m	13' 5 x 12' 7 ft
Family Bathroom	3.5 x 2.5 m	11' 4 x 8' 2 ft
Landing	3.8 x 4.2 m	12' 4 x 13' 7 ft

Orchard House Properties,  
The Wyvern, Church Street, Malpas, Cheshire, SY14 8NU

**01948 512 003**  
info@ohpdl.co.uk  
www.orchardhouseproperties.co.uk